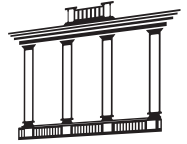
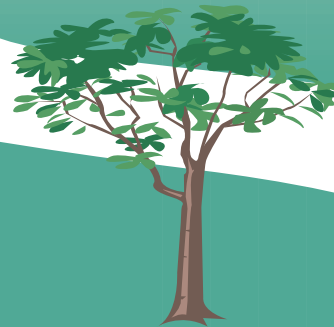




Summit County  
Historical Society

550 Copley Road  
Akron, Ohio 44320-2324  
(330) 535-1120  
Fax (330) 535-0250  
[www.summithistory.org](http://www.summithistory.org)

# Historical Tree Tour



Summit County  
Historical Society



*A Self-Guided Walking Tour  
of Historically Significant Trees*



1

### American Beech

*Fagus grandifolia*

One of the most distinctive native trees of the eastern hardwood forests and easily recognized by its smooth blue-grey trunk. The nuts are an important food source for several species of birds as well as squirrels. During the pioneer days, the nuts were often collected to feed to swine. Col. Simon Perkins planted this American Beech during the 1830's while the Perkins Stone Mansion was being built.



4

### Common Baldcypress

*Taxodium distichum*

Naturally found in swampy areas of the south and will tend to grow in pure stands. When grown in or next to standing water, the roots will form conical shaped growths above the water. It is thought that these growths, called "knees", are used as a way to gather oxygen for the roots. Baldcypress' wide flared root systems are designed to support itself during hurricane force winds. Family legend claims that Col. George Tod Perkins (the oldest son of Col. Simon Perkins) planted this tree after his return from duty in the Civil War, specifically after his service in Sherman's March to the Sea, which occurred in 1864.



2

### Copper Beech

*Fagus sylvatica*  
'Atropunicea' ('Purplea')

Purple leaf beech have all been derived from the European Beech (*Fagus sylvatica*), no official cultivars have arrived from the American Beech (*Fagus grandifolia*). This variety has been found on occasion in the wild in Europe and has also been reproduced through cultivation.

Col. Simon Perkins planted this Copper Beech during the 1830's while the Perkins Stone Mansion was being built.



5

### Japanese Maple

*Acer palmatum*  
'Bloodgood'

One of the hardiest of all Japanese Maple cultivars. Will withstand most of Ohio's winters and will tolerate heat well. This cultivar is widely used as far south as Florida. 25' – 30' height and spread is possible for this cultivar, but somewhat unusual.

6



### Red Maple

*Acer rubrum*

3

One of the first native forest trees to flower in the spring. Red Maple has been widely used as an ornamental tree and is loved for its brilliant scarlet fall color.



### Serviceberry

*Amelanchier*

Native to most of the Eastern states, Serviceberries can make excellent landscape plants. Their flowers, interesting bark and fruit make them a "four season" landscape plant. The edible fruit, if prepared correctly and properly identified, can outrank any blueberry pie.

7



